



Specs Overview

Steelhead Trout Trim E DS 2" PBO



Steelhead Trout, Skinless Fillet - Trim E Skinless 2" PBO

Product Details

1. Specie: Steelhead Trout (*Oncorhynchus mykiss*) | Non-scombroid
2. Quality: Premium / Sashimi Grade
3. Product Trim: Fresh / Frozen Skinless Fillet - Trim E Skinless 2"
4. Country of Origin: Chile
5. Catch Method: Farm Raised
6. Certifications: BAP
7. Color: 26+ SalmoFan (fresh or thawed)
8. Bones: Pin Bones Out (PBO)
9. Pigment: Ax (Astaxanthin)
10. Skin: Skin Off
11. Size: 1.0 – 2.0Lbs (450 – 900gr)
2.0 – 3.0Lbs (900 – 1,350gr)
3.0 – 4.0Lbs (1,350 – 1,800gr)

12. Other:
 - No bruises or melanosis greater than 1.5cm²
 - All fillets are deboned mechanically and controlled with a manual check
 - Gaping of an individual fillet could be up to 10cm, of the total fillet surface.

Packaging Description

| | Fresh | Frozen |
|-----------|--|--|
| Primary | Bulk Packed, Interleave with Plastic Liner | Individually Vacuum Packed (IVP), Product handling information and Traceability info |
| Secondary | Styrofoam Box (10 or 35Lbs masters), Catch Weight (Variable Weight) | 10Kg / 22Lbs Fixed Net Weight |
| Label | Product Description, Size, Units per Case, Quality, Traceability Information, Box ID, Best by Date, Certifications | |

Foreign Material

All products must successfully pass a metal detection. The machine must be able to detect metal pieces with the following minimum distinctiveness; Ferrous 3.0 - 4.5mm, Non-Ferrous 3.5 – 5.5mm and Stainless Steel 6.5mm.

Microbiological Standards

- In accordance with regulations and processing procedures defined by HACCP

Microbiological Limits n= 5 c= 0

| Microbiological Determination | Limits | Category A | |
|-------------------------------|-------------|------------|---|
| | M | n | c |
| TBC at 35°C [95° F] (cfu/g) | 5 5 x 10 | 5 | 3 |
| S. Aureus (cfu/g) | <10 | 5 | 2 |
| E. Coli (MPN/g) | <0,3 | 5 | 3 |
| Salmonella (25 g) | Absence | 5 | 0 |

Table: In accordance to the current standards; sampling plan and microbiological determinations for seafood.

- n = size of the sample
- c = acceptance number
- M = Limit level of acceptance

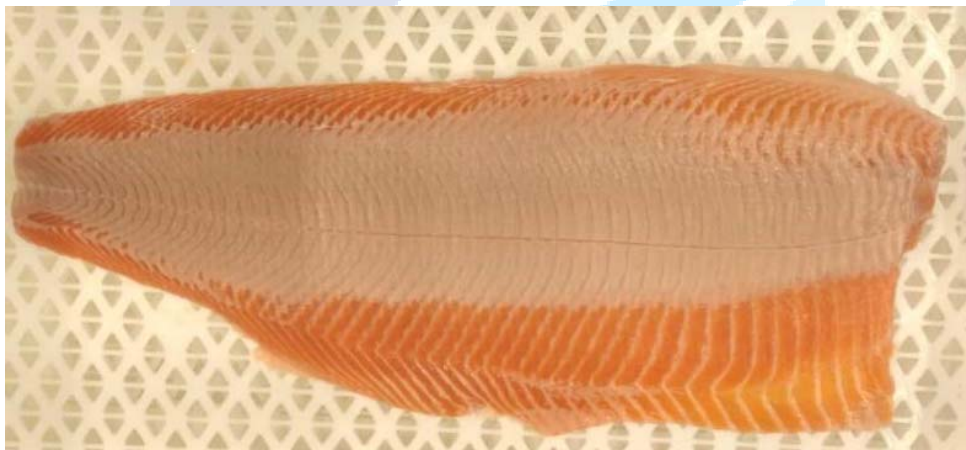


Specs Overview

Steelhead Trout Trim E DS 2" PBO



Product Image



Safe Handling Instructions

All our products are manufactured following HACCP procedures, this help to minimize risk of contamination of pathogens and other foreign materials.

We recommend the following safe handling instructions to avoid bacterial contamination or product deterioration:



Specs Overview

Steelhead Trout Trim E DS 2" PBO



- For fresh items, keep product refrigerated between 0° – 4°C (32° – 39°F)
- For frozen items, keep product frozen at -18°C (0°F) or below.
- Thaw under refrigerated conditions
- Keep raw salmon separate from other food.
- Cook it thoroughly or until the inner temperature reaches 63°C (145°F)



Blue Raised
An Ocean of difference